

Incore Solutions

The Core of Your Success

Jelle Minnema
Sales Manager

T +31 85 48 828 12

M +31 62 92 587 92

jelle.minnema@incoresolutions.com

Linked in profile

www.incoresolutions.com



De Dreef 15
3706 BR Zeist
The Netherlands
t +31 85 48 828 00

www.incoresolutions.com/disclaimer | www.incoresolutions.com/disclaimer-en



Incore Solutions is...



Since 2007

Specialized in Application BI

Business Processes

Business Intelligence

Oracle BIApps

OFMA

Endeca

BI Cloud

15 Employees

ERP,

Projects in Europe

CRM, EPM

Strategic Oracle Partner

member BI Partner Advisory Council

official Oracle training partner (OBIA and OBIEE)



Incore Solutions, Our Customer selection



Gemeente Den Haag

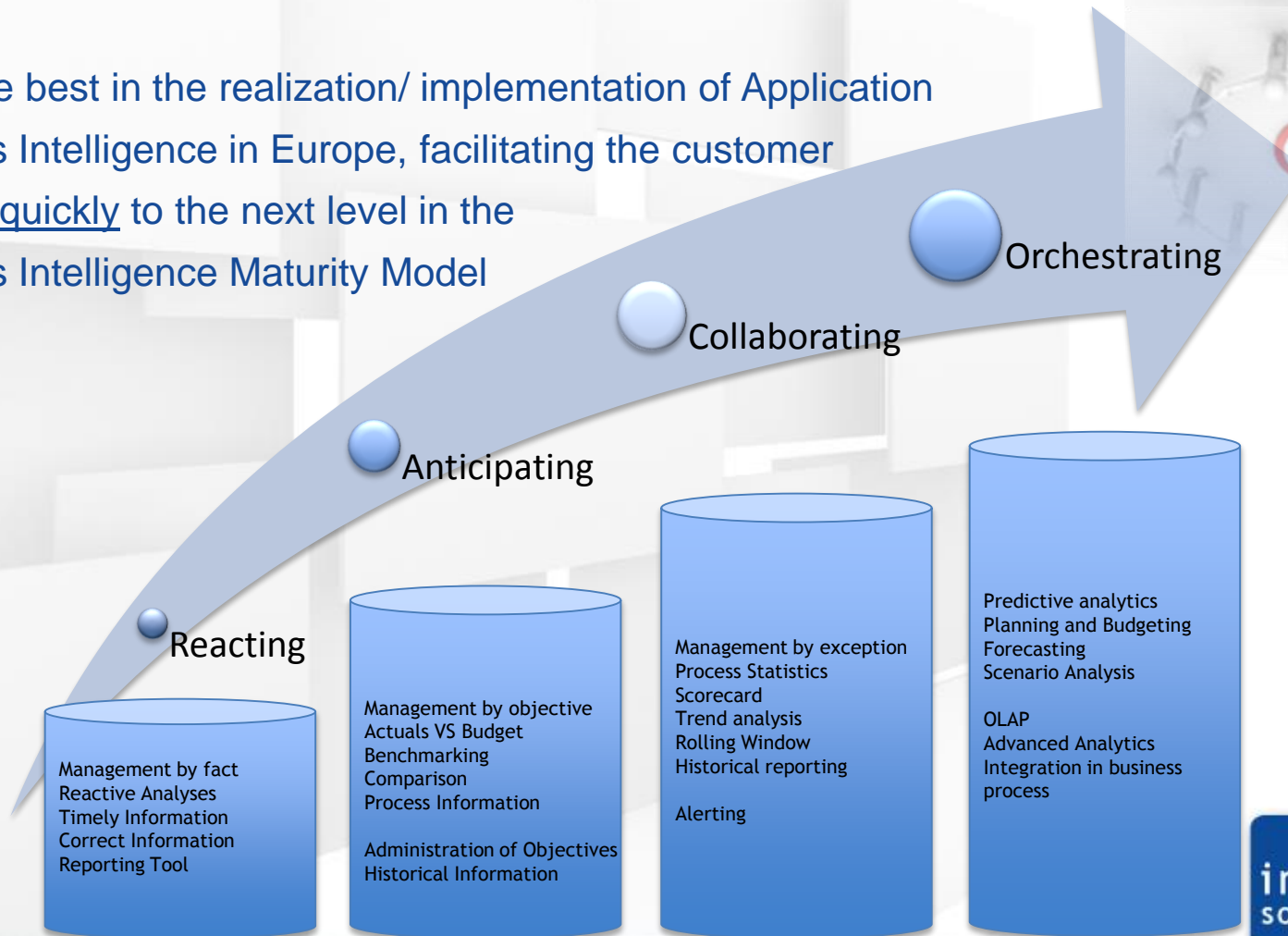


Gemeente Rotterdam



Mission

Being the best in the realization/ implementation of Application Business Intelligence in Europe, facilitating the customer to move quickly to the next level in the Business Intelligence Maturity Model



In many cases, this is the case...

In the Business Intelligence / DWH arena



Innovation in Business Intelligence

Implement versus Build



*I don't care
what you
do, but I
need these
x-hundred
reports*



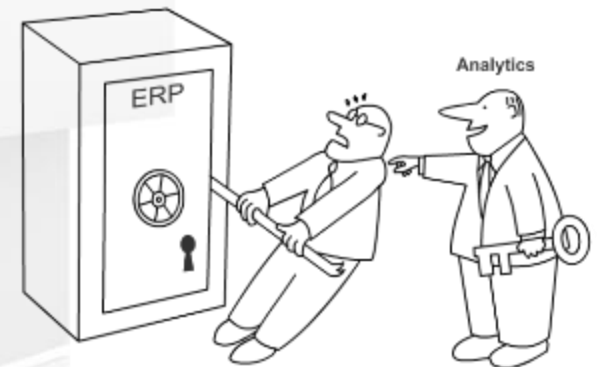
*Do you
Really want
to spend x-K
euros
building
something
you have
today*

Innovation in BI

leads to this...

- Application Business Intelligence
- The business is leading; technology is not an issue
- Take the application as a starting point
- New way of implementation
- Results in weeks not years

- Our portfolio of BI standard solutions:
 - BI Applications (ERP)
 - Oracle Financial Management Analytics (EPM)
 - Endeca for EBS (ERP)



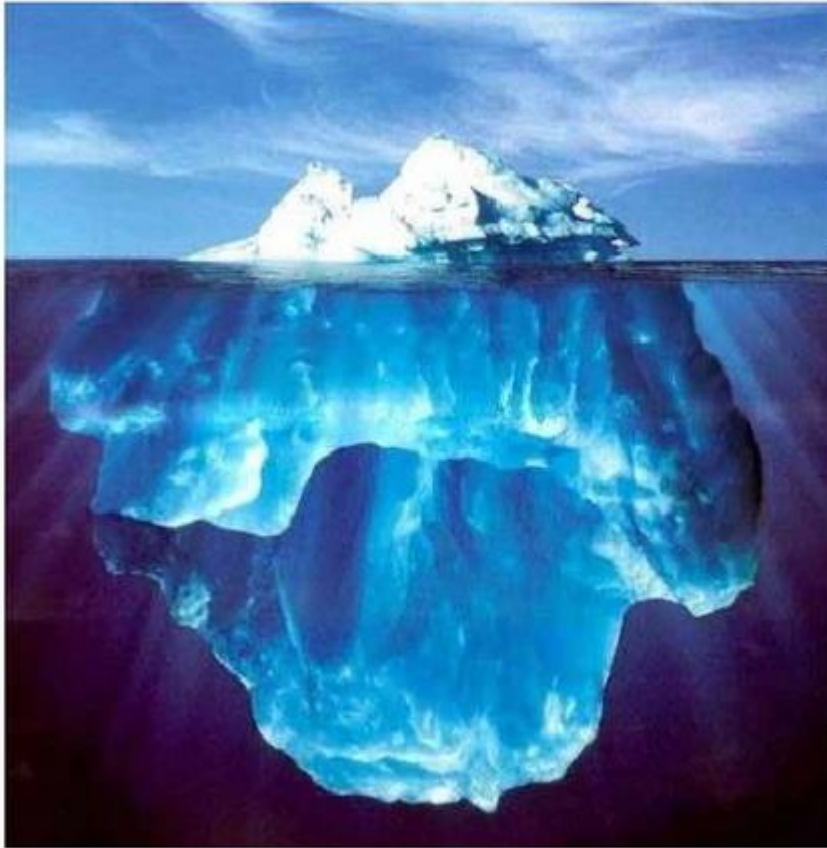
"I have some good news for you!"

freedlist.com



Complete BI solution

...is more than just dashboards



DASHBOARDS

- "Visible"



"PLUMBING"

- "Under the Surface"
- Significant time, resources and expertise required



- Data warehouse design
- Data mapping & transformation from multiple applications
- Analytic models, KPIs, metrics
- Much more...

Building your own car

Application Business Intelligence



Standardized Business Intelligence

Application Business Intelligence

- Accelerate business innovation by drastically reducing the time deploying BI solutions.
- Preconfigured BI Applications for a variety of data sources.
- Enable organizations to **extend the value of their existing IT investments** with intuitive, role-based intelligence and power better decisions.
- Support business functions and industry-specific processes with **best-practice analytics based on experience** across hundreds of CRM and ERP automations.



Business Intelligence Applications

Pre-built, Pre-mapped, Pre-packaged

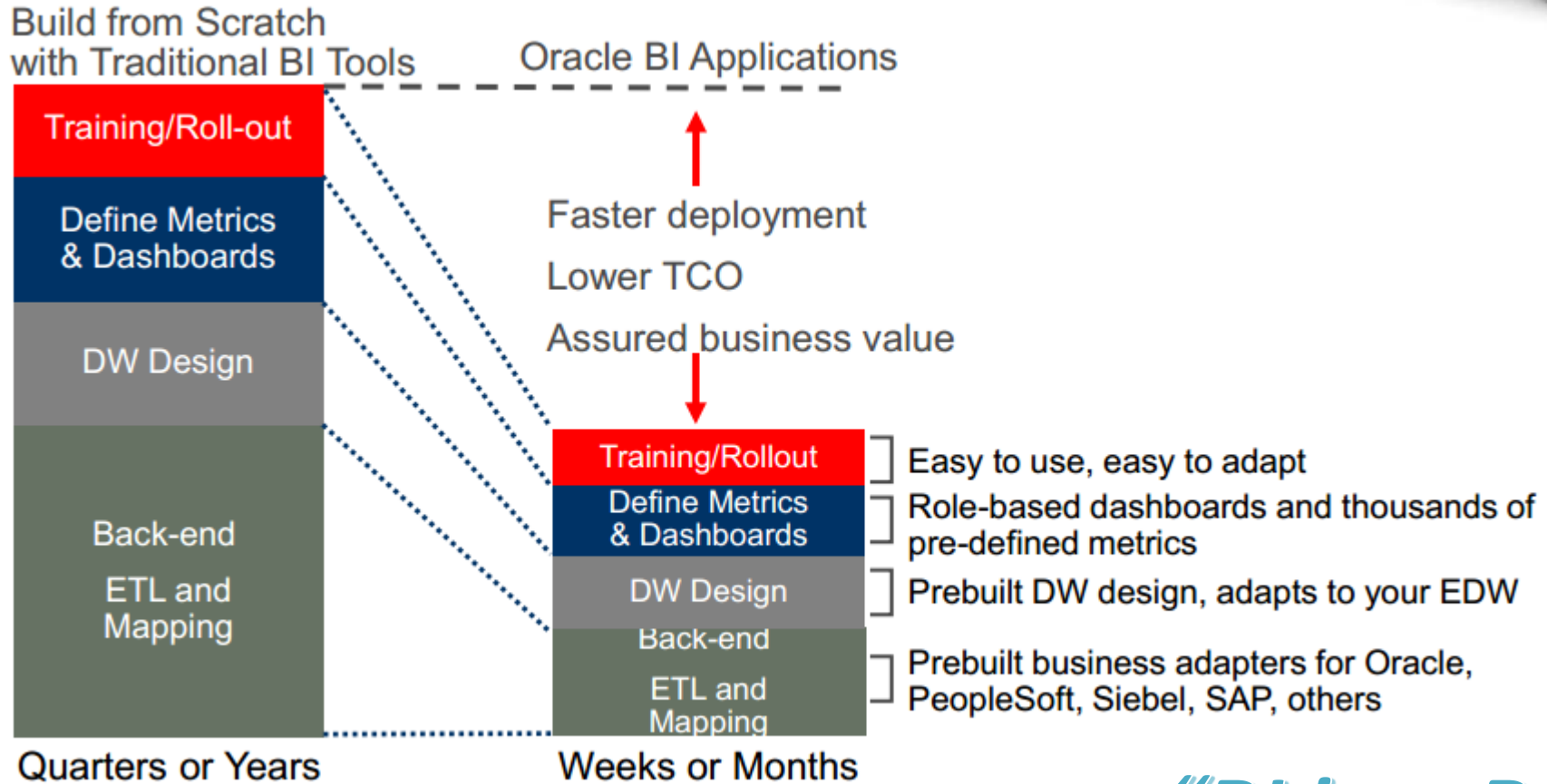


Business Intelligence applications:

- Pre-built data models and schema
- Pre-built ETL and mappings
- Pre-mapped metadata
- Pre-packaged metrics, dashboards and reports



If TCO is important... standardize...



Using Oracle Business Intelligence Applications significantly reduces the amount of time needed to complete each of the four steps in building and deploying a BI solution

“BI in a Box”

Benefits BI Application



Business benefits of a standard BI Application:

- Faster Implementation, Lower Risk
- Lower TCO (implementation, maintenance)
- Better Business Results (based on best-practices)
- Next-Generation Business Intelligence Platform
- Insight Where and When You Need It
- Leverage Your Existing Oracle Investments



Oracle Business Intelligence Applications

Enterprise Analytics



- Analytic modules on ERP and CRM
 - Oracle Applications
 - EBS, Siebel, JDE, Peoplesoft
 - SAP
 - *Every other ERP and CRM*
- Dimensional model (DWH)
- Dozens of dashboards
- Hundreds of reports
- Choose your entry point:
 - Role, Industry, Product Line

- Financials
- HR
- Procure & Spend
- Projects
- Supply Chain
- Order Management

- Financial Close
- Strategic Planning
- Planning & Forecasting
- Profitability Management



- Sales
- Marketing
- Service
- Contact Center
- Price
- Loyalty
- Communications
- Healthcare
- Retail
- Public Sector
- Financial Services

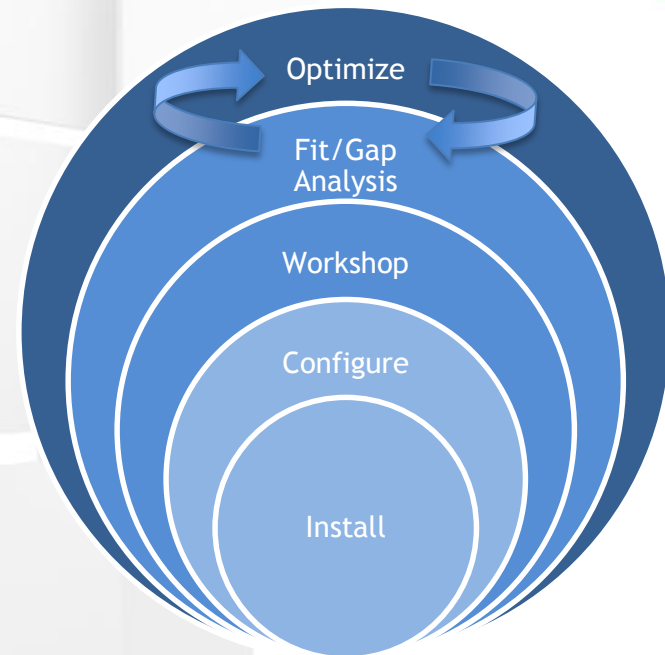
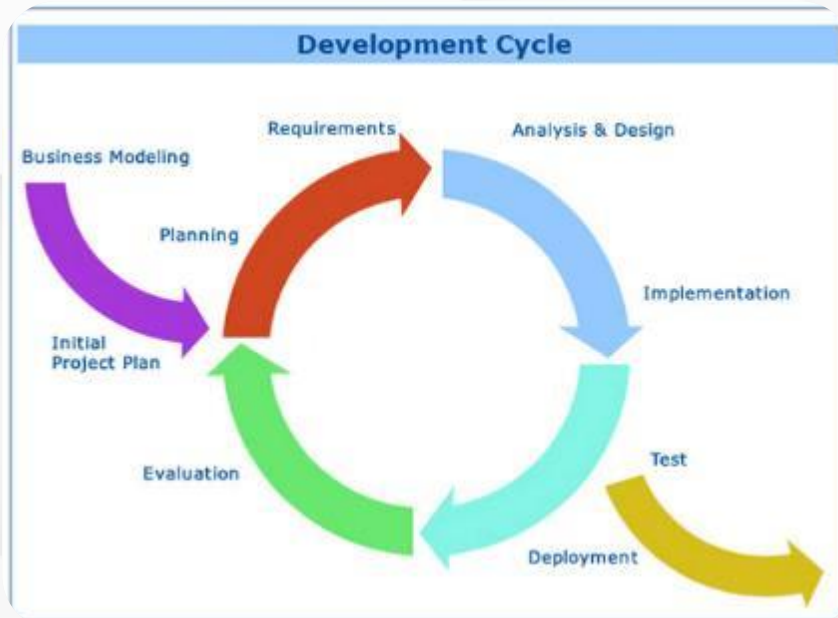
New implementation Approach

Take the application as a starting point

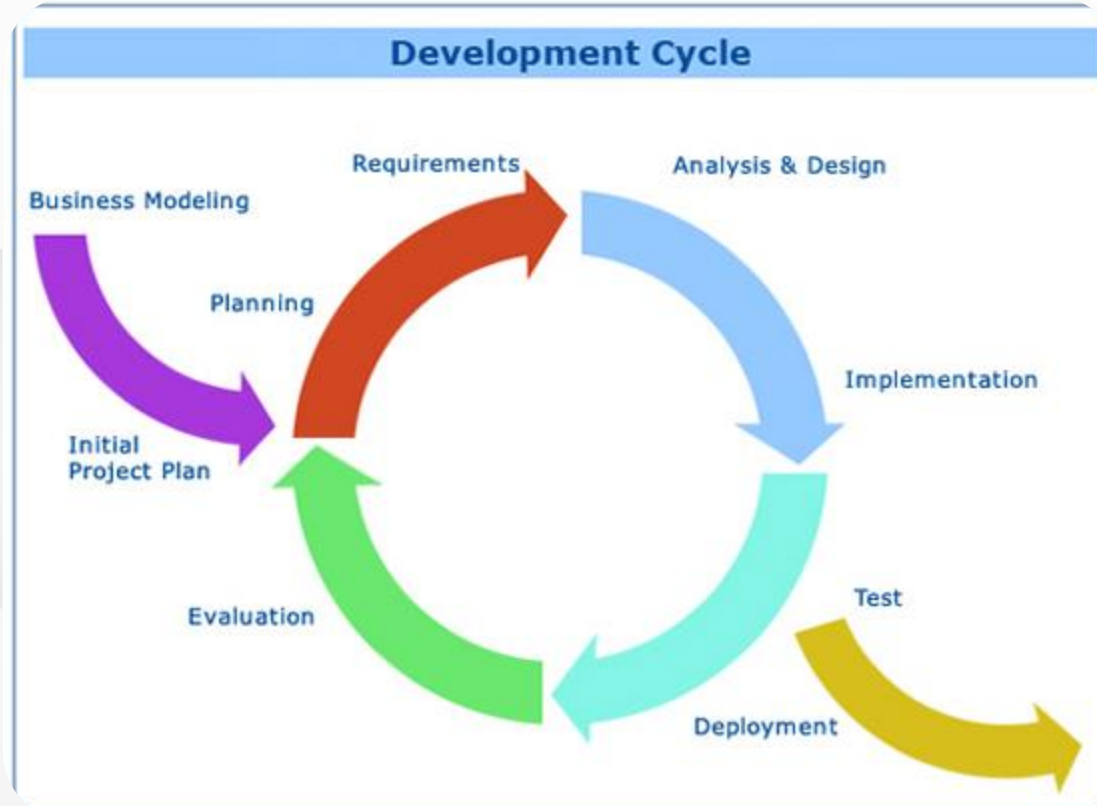


Fast and Iterative approach

New way of Implementation

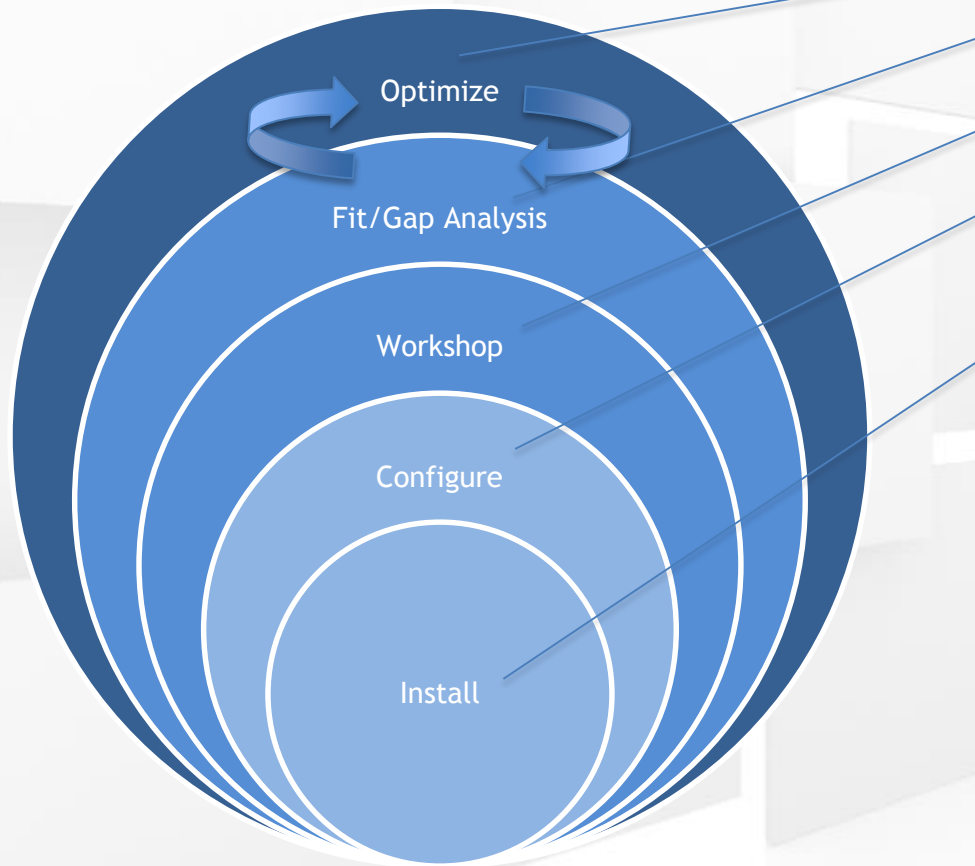


Traditional Approach



The Difference is why!

New way of Implementation



- realization of the identified and approved gaps.
- including testing etc.

requirements

- compile technical design
- initiate project plan for implementation

standard functionality

- identify potential missing data components
- implement the simple alterations
- feedback session

BI Applications Service Offerings



APPLICATION BI Services		Total	Advanced	Basic
	Introduce Sounds Good, show it to me!	✓		
	Initiate Get to work... standard BI in 8 weeks!	✓	✓	✓
	Investigate Specific needs... also based on standard BI please!	✓	✓	✓
	Implement A tailored suite, suits you right. We will tailor BI for you!	✓		
	Instruct Nice, standard BI... please tell me how it works!	✓	✓	
	Insupport You want information... we take care of it!	✓	✓	
	Incontrol Development of BI seems difficult... we know what's needed!	✓		
	Inspect Your BI project... let us tell you what we think of it...			



BI Apps vs Embedded BI in Fusion



	BI in Fusion Applications	Oracle BI Application for Fusion Applications
Business Solution	Current State Analysis	Unlimited Historical Analysis
Business Process Reporting	Tactical Reporting	Strategic Reporting
Users	Fusion Application Operational Users	Managers and Knowledge Workers
Data Sources	Homogeneous – Fusion Applications-Centric	Heterogeneous – Multiple Business Areas and Disparate Applications
Data Preparation	Granular Views, No Data Movement	Data Warehouse Model With Transactional Detail, Persisted Data, ETL, Bulk and Incremental Data Movement,
Data Availability	Real Time	Updated Periodically via ETL
Cross Functional Analysis	Single Semantic Model with Conformed Dimensions Across Both	



BI Apps – Functional Analytical Modules



CRM ANALYTICS			ERP ANALYTICS			
SALES <ul style="list-style-type: none"> • Pipeline Analysis • Forecast Accuracy • Up-sell/Cross-sell • Cycle Times • Lead Conversion • Sales Team Effectiveness 	MARKETING <ul style="list-style-type: none"> • Campaign Effectiveness • Customer Insight • Product Propensity • Market Basket Analysis • Campaign ROI 	SERVICE & CONTACT CENTER <ul style="list-style-type: none"> • Service Effectiveness • Customer Satisfaction • Resolution Rates • Service Rep Efficiency • Service Cost • Service Trends 	FINANCIALS <ul style="list-style-type: none"> • General Ledger • Accounts Receivable • Accounts Payable • Cash Flow • Profitability • Expense Management • US Federal GL 	PROCUREMENT & SPEND <ul style="list-style-type: none"> • Direct & Indirect Spend • Buyer Productivity • Contract Compliance • Supplier Performance • Purchase Cycles • Employee Expense 	SUPPLY CHAIN & ORDER MGMT <ul style="list-style-type: none"> • Revenue & Backlog • Inventory / BOM Analysis • Fulfillment Status • Customer Status • Order Cycle Time 	ENTERPRISE ASSET MGMT <ul style="list-style-type: none"> • Maintenance History • Maintenance Costing • Asset Genealogy • Breakdown & Preventive • Quality • Inventory
LOYALTY <ul style="list-style-type: none"> • Member Demographics • Membership Trends • Program Revenue • Promotion Effectiveness • Points Analysis 	PRICE <ul style="list-style-type: none"> • Price Segments • Price Waterfall Analysis • Deal Life Cycle • Deal Desk Analysis • Product Pricing Performance 	PUBLIC SECTOR CASE <ul style="list-style-type: none"> • Case Lifecycle Management • Incident Analysis • Lead Tracking • Benefits Analysis • Real-time Siebel WorkCenter 	HUMAN RESOURCES <ul style="list-style-type: none"> • Employee Productivity • Compensation • Talent Management • Recruiting Analysis • Learning Analysis • Workforce Profile 	PROJECTS <ul style="list-style-type: none"> • Project Funding and Budget • Product Cost • Project Revenue • Project Billing • Project Profitability 	MANUFACTURING <ul style="list-style-type: none"> • Plan to Produce • Work Orders • Inventory and WIP • Quality • Resource Usage • Bill of Material • Costing / Kanban 	

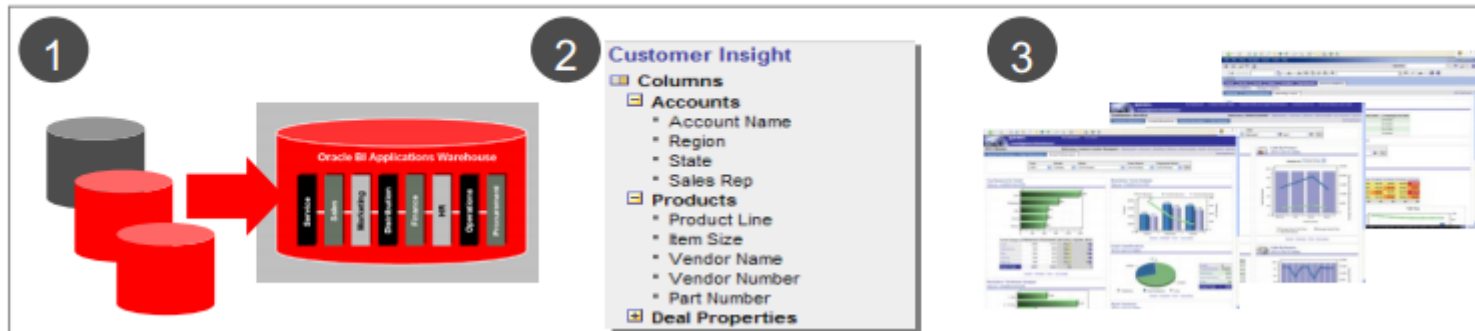
ORACLE BI SUITE ENTERPRISE EDITION PLUS

SOURCE ADAPTERS: **ORACLE** PeopleSoft. **SIEBEL** J D EDWARDS AND OTHER OPERATIONAL AND ANALYTIC SOURCES

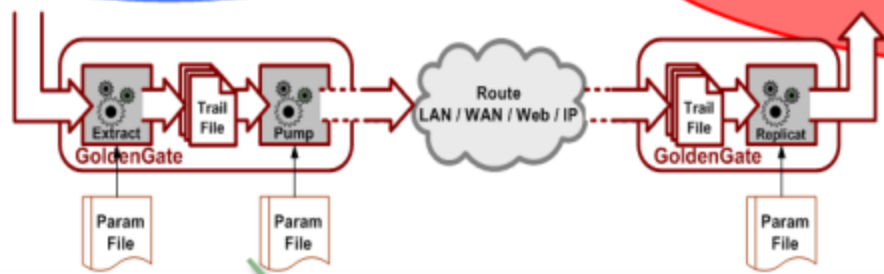
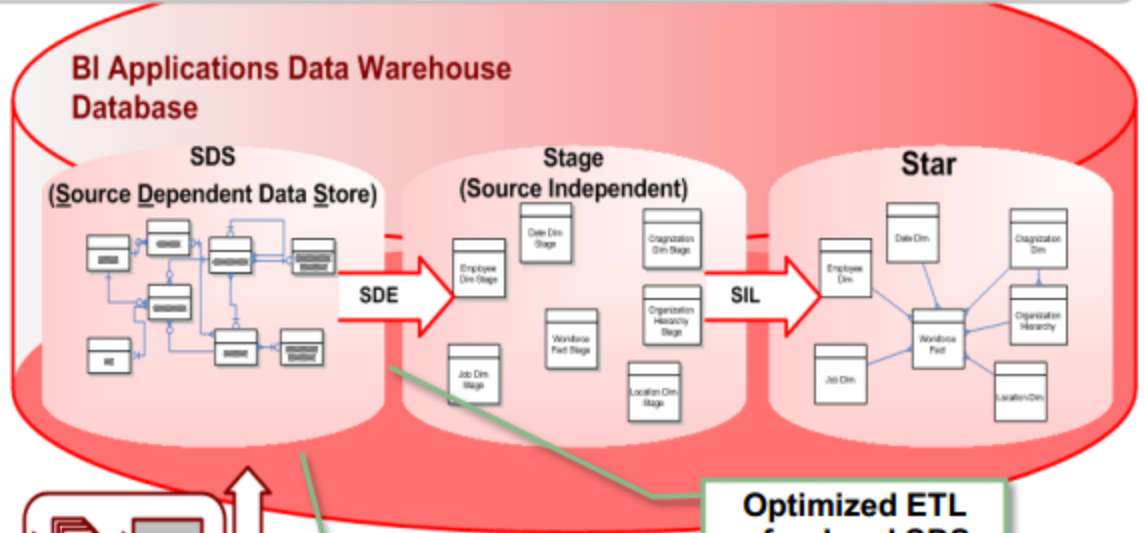
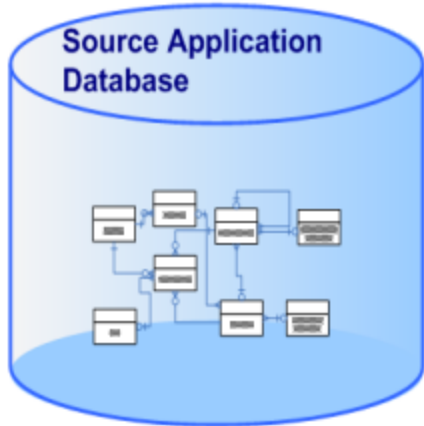
BI Apps in a nutshell



- Integrates Data for Analysis and Reporting
 - Pre-built integration of data from Oracle EBS, PeopleSoft, Siebel, JD Edwards, into an integrated data warehouse optimized for analysis
- Provides User-Friendly Analytic Model of Enterprise Data and Metrics
 - Embedded best practice calculations, metrics, and KPIs
 - Easy for business people to access, analyze, and use the information
- Delivers Personalized Performance Dashboards for Everyone
 - Thousands of pre-built dashboards, reports, and alerts by business function and role



BI Apps - ETL Architecture



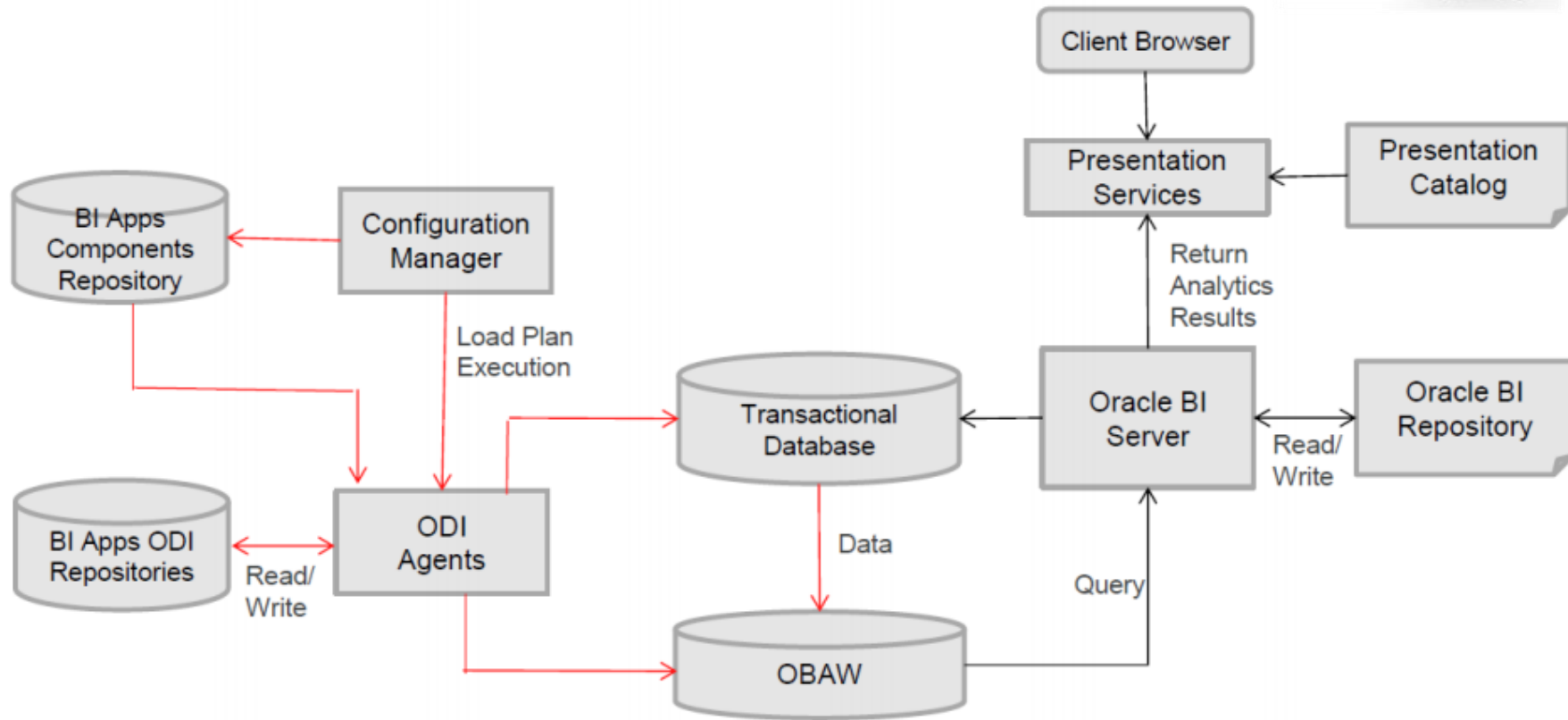
Optimized ETL for local SDS

Persistent store
Optimized for
Incremental ETL
Captures deletes

Generated based on a customers BI Apps deployment



BI Apps - Process Flow



Demonstration BIA



Nick Hilge

Oracle BI Consultant

m +31(0)6 - 15 0000 69

t +31(0)85 - 48 828 18

nick.hilge@incoresolutions.com

LinkedIn profile

www.incoresolutions.com



De Dreef 15

3706 BR Zeist

The Netherlands

t +31(0)85 - 48 82 800

